

MONTHLY MEMBERSHIP PROGRESS REPORT

LOCATION INDIA

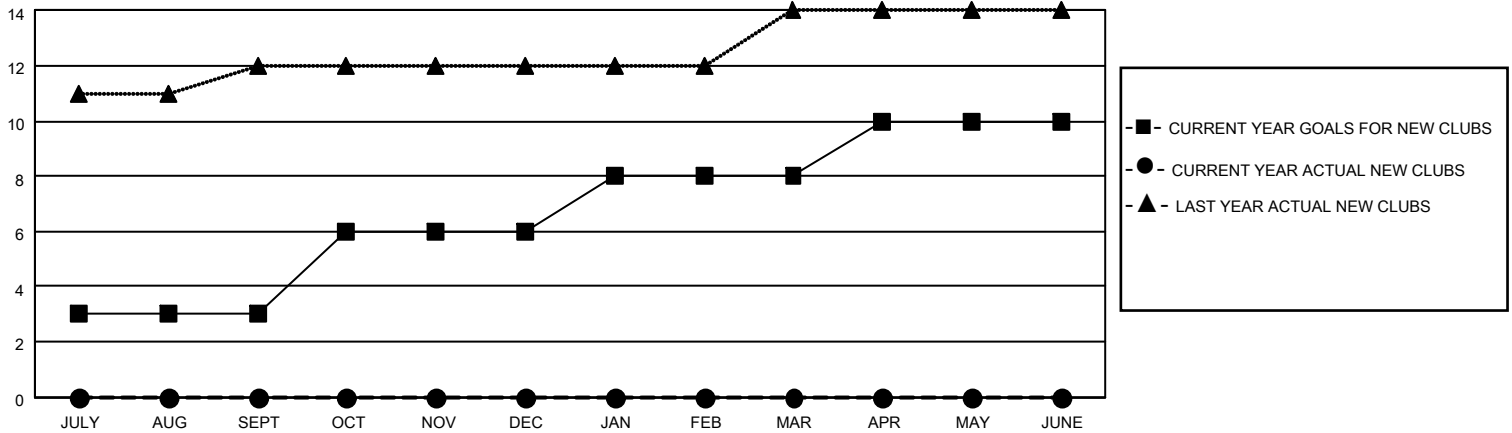
District 3232B2

Results as of: 3/31/2023

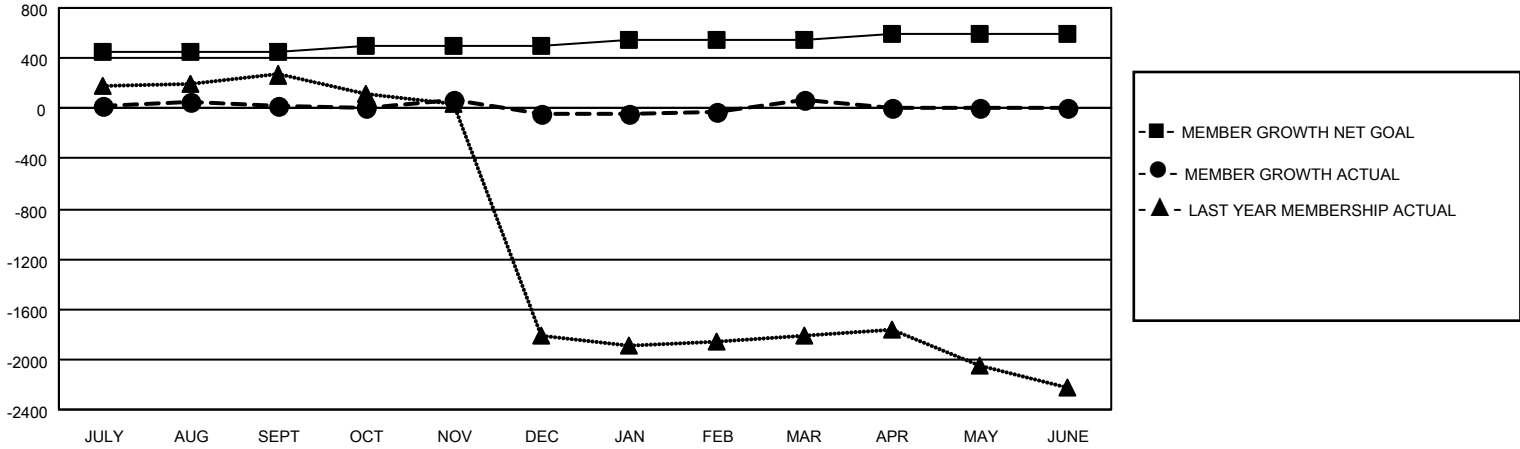
Clubs			
RESULTS FOR 2022-2023			
QUARTER	NEW CLUB GOAL	NEW CLUBS	DROPPED CLUBS
JULY/AUG/SEPT	3	0	56
OCT/NOV/DEC	3	0	4
JAN/FEB/MAR	2	0	1
APR/MAY/JUNE	2	0	0

Members			
RESULTS FOR 2022-2023			
QUARTER	MEMBER GROWTH NET GOAL	MEMBER GROWTH ACTUAL	DROPPED MEMBERS ACTUAL (including transfers)
JULY/AUG/SEPT	450	119	87
OCT/NOV/DEC	50	228	275
JAN/FEB/MAR	50	138	18
APR/MAY/JUNE	50	0	0

GOALS AND ACTUAL NEW CLUBS CUMULATIVE



GOALS AND ACTUAL MEMBERS CUMULATIVE



DROPPED CLUBS: 61

69 CLUBS OF 180 ADDED 1 OR MORE NEW MEMBERS

GENDER DISTRIBUTION

MALE	2,450 (55.54%)
FEMALE	1,961 (44.46%)
NON BINARY	0 (0.00%)
PREFER NOT TO ANSWER	0 (0.00%)

DROPPED MEMBERS

[CLICK HERE FOR CUMULATIVE MEMBERSHIP DATA](#)

DECEASED	3
CLUB CANCELLED	49
OTHER	328
TOTAL	380

TOTAL FAMILY UNIT MEMBERS 3,927

FAMILY MEMBERS PAYING HALF DUES 2,878